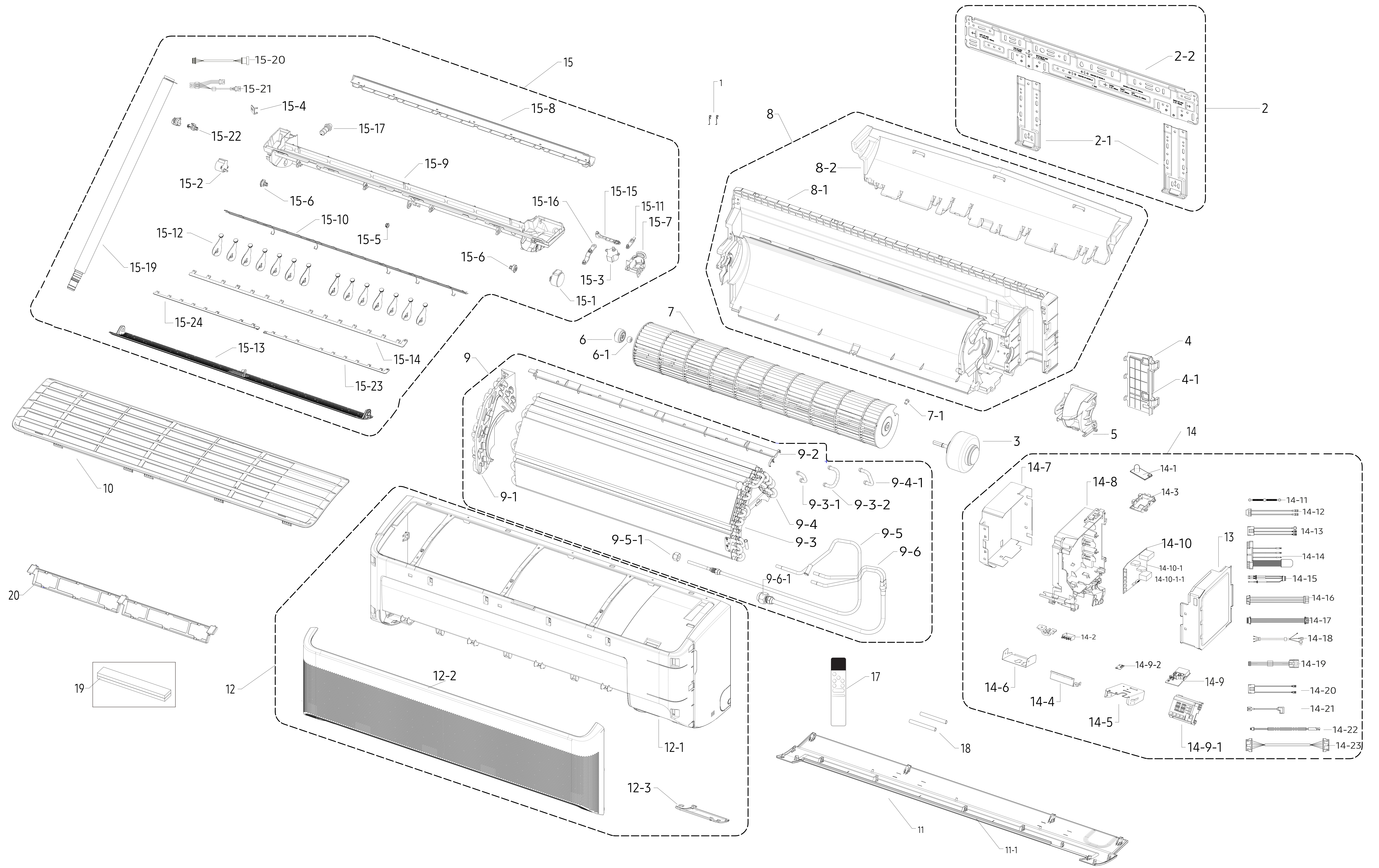


EXPLODED VIEW : INDOOR



AR07CXCAAWKNEU					
No.	Code No.	Description	Spec.	Q'ty	SA/SNA
1	DB67-60030A	SPRING-SENSOR	WW2-PJT,STS301,0.4mm,T0.4,NONE,W2.7	2	SA
2	DB90-11453A	ASSY HANGER	AR9500T,QMD RAC 1, 2	1	SA
3	DB31-00636A	MOTOR BLDC FAN	RD-310-25-8A(AL),1500,310V,1,27W	1	SA
4	DB90-11563B	ASSY HOLDER-PIPE	AR9500T,Recycle PP	1	SA
4-1	DB61-07413B	HOLDER-PIPE	RAC QMD,PP,T2,D,BLACK,-,-,P-001S	1	SA
5	DB63-04215B	COVER MOTOR	PP+TD30%,T1.8,HB,BLACK,-,SSPP-T30	1	SA
6	DB94-00455B	ASSY-RUBBER BEARING	AR18MC5UDMCNNA,ASSY	1	SC
6-1	DB94-40007B	ASSY BEARING	G1-PJT,SSEC	1	SC
7	DB94-02933A	ASSY FAN CROSS	JUNGFRAU,SSEC	1	SA
8	DB94-07969A	ASSY BACK BODY	AR9500T,QMD RAC 2	1	SA
9	DB96-24844A	ASSY EVAP-MODULE	S2-3,L660, 1BY2, EU	1	SA
9-5-1	DB60-30010A	FASTENER-NUT FLARE	-,BRASS,-,-,-,1/4"	1	SA
10	DB63-04208A	FILTER AIR-PRE MODULE	AR9500T, QMD RAC2,HIPS,DA WHITE,-,Biocidal_Y,XQ83180	1	SA
11	DB90-11932B	ASSY COVER-PANEL	QMD RAC2, WIND-FREE,DB68-08680A	1	SA
11-1	DB63-04226A	COVER PANEL	AR9500T, QMD RAC2, WIND-FREE,HIPS,T2.5,-,DA WHITE,-	1	SA
12	DB92-04822F	ASSY PANEL FRONT	GEO,DIT+Bixby+PIR,Option filter,QMD RAC2, WIND FREE	1	SA
12-1	DB64-03462A	PANEL FRONT	AR9500T, QMD RAC2, WIND-FREE,HIPS,XQ83180,DA WHIT	1	SA
12-2	DB64-03471A	GRILLE INLET	AR9500T, QMD RAC2, WIND-FREE,,HIPS,T3,DA WHITE,-,X	1	SA
12-3	DB93-17180C	ASSY DISPLAY	AR9500T,Hole, DIT +SmartThings+PIR	1	SA
13	DB61-07430A	PLATE CONTROL-RIGHT	AR9500T,GI-SGCC,T0.3	1	SA
14-1	DB32-00270A	SENSOR PHOTO	SA5-0670,5V	1	SA
14-2	DB37-00033A	TERMINAL BLOCK	DAF-4P-M,MELAMINE,300V,30A,58.7X36.4X22mm,D4,NO,4	1	SA
14-3	DB63-04265A	COVER PCB	HIPS,-,L76.5,-,BLACK,-,HIPS 3315,WIFI COVER	1	SA
14-8	DB61-07432A	CASE CONTROL-IN	AR9500T,ABS,L260,BLACK,VE-0858	1	SA
14-9	DB92-05040C	ASSY PCB DISPLAY	DISPLAY_DLX_TP2X,QMD RAC AR9500T,50x84.5mm,88,Ex	1	SA
14-9-1	DB61-07412A	CASE-LED	AR9500T, QMD RAC,HIPS,T1.8,L69,BLACK,-,HIPS 3315,8.8	1	SA
14-9-2	4709-002610	W-LAN MODULE	CWAM210S,ARTIK 051,IEEE802.11,2.4GHz,5V,1X1,54.0x30	1	SA
14-10	DB92-04839A	ASSY PCB MAIN	MAIN,QMD RAC AR9500T,142x121mm,220V-240V,5V,12V,	1	SA
14-11	DB93-14245D	ASSY CONNECTOR WIRE-EARTH	1,1015,16,YEL/GRN,ST710095-3,ST710095-3,-,380,-,-,-,-,E	1	SA
14-12	DB93-17055B	ASSY CONNECTOR WIRE-COMM	2,1007,22,RED,SMH250-03L/RED,179973-1,-,270,PVC TUBI	1	SA
14-13	DB93-17169A	ASSY CONNECTOR WIRE-POWER	3,1015,18,BRN,YH396-05VR/BLU,175022-1,ST710095-3,15	1	SA
14-14	DB32-00272A	SENSOR HUMIDITY	5V,10-90%RH,AC,DLX,5%,400mm,28P	1	SA
14-15	DB61-07464A	CASE PCB	AR9500T,HIPS,-,L65.7,BLACK,-,HIPS 3315,WIFI	1	SA
14-16	DB93-17170A	ASSY CONNECTOR WIRE-DC SIGNAL	4,1007,26,BRN,SMH200-H04H3/WHT,EH-4Y/WHT,-,-,100,-,-,-,	1	SA
14-17	DB93-17190A	ASSY CONNECTOR WIRE	5,1007,26,RED,SMH200-H05H3/WHT,SMH200-H05H3/RED,	1	SA
14-23	DB93-17178A	ASSY CONNECTOR WIRE-DC SIGNAL	14,2095,26,RED,SMH200-H14H3/WHT,SMH200-H14H3/WHT	1	SA
15	DB94-07996A	ASSY TRAY DRAIN-MODULE	DA WHITE,QMD RAC 2,WIND FREE	1	SA
15-1	DB31-00371A	MOTOR STEP	-,DC12V,650gf.cm,E CLASS,1W,5.625deg,1/64	1	SC
15-2	DB31-00371C	MOTOR STEP	-,DC12V,650gf.cm,E CLASS,5.625deg,1/64	1	SA
15-3	DB31-00695A	MOTOR STEP 2P	STEP MOTOR,DC 12V,650gf.cm,E CLASS,1W,5.625deg,1/6	1	SA
15-4	DB61-06989A	HOLDER WIRE	F11-RAC,HIPS,-,W16.5,L17,BLACK,-,-,HIPS 3315,MOTOR	1	SA
15-5	DB61-07418A	HINGE BLADE-A	AR9500,POM,T0.7,NATURAL,W10.1,LW301,-,-	1	SA
15-6	DB61-07419A	HINGE BLADE-B	AR9500,POM,T0.7,NATURAL,W16.1,LW301,-,-	2	SA
15-7	DB61-07440A	CASE MOTOR	QMD RAC,HIPS,T2,L53.2,BLACK,-,HIPS 3315,CASE STEP M	1	SA
15-10	DB63-04250A	GUARD-SCREEN	AR9500T,MSWR,T1,BLACK,QMD2,L660.4	1	SA
15-11	DB66-01727A	LINK BLADE-C	A3050, F-RAC-04,POM,NATURAL,-,LW301	1	SA
15-12	DB66-02038A	BLADE V	AR9500,PP,T1.6,BLACK,QMD RAC_NO WIND(AUTO)	14	SA
15-13	DB66-02043A	BLADE H	AR9500,ABS,T3.3,DA WHITE,-,SR-0320K,QMD RAC2_No W	1	SA
15-14	DB66-02046A	LINK BLADE-A	AR9500,POM,L587.6,T2.5,BLACK,QMD RAC2	1	SA
15-15	DB66-02048A	LINK BLADE-B	AR9500,POM,L63.9,T2.2,BLACK,QMD RAC3	1	SA
15-16	DB66-02049A	LINK BLADE-D	AR9500,POM,L59.1,T2.2,BLACK,-,LW301,QMD RAC	1	SA
15-17	DB73-00180A	RUBBER-CAP DRAIN	SS-PJT,EPDM,T3,-,PM GRAY,-,L 40,-	1	SA
15-18	DB93-17189B	ASSY CONNECTOR WIRE	5,2095,26,RED,SMH200-H05H3/BLK,25045HP-05A/WHT,-,1	1	SA
15-19	DB94-02195B	ASSY DRAIN-HOSE	ALL,HOSE DRAIN L550mm	1	SA
17	DB96-25924C	ASSY WIRELESS REMOCON	23. RAC,RS-9,ENGLISH,16.5*27.2,°C,RAC,Heat Pump,SAM	1	SA
18	DB81-01328A	INSULATION TUBE	PO,T0.5,W8,L70,-,BLACK,-	2	SA
19	DB94-08209A	ASSY FILTER	AR9500T,Tri-care	1	SA
20	DB61-07416A	HOLDER PANEL-FILTER	AR9500T, QMD RAC1,2, WIND-FREE,HIPS,T2,W46,L508,DA	1	SA